



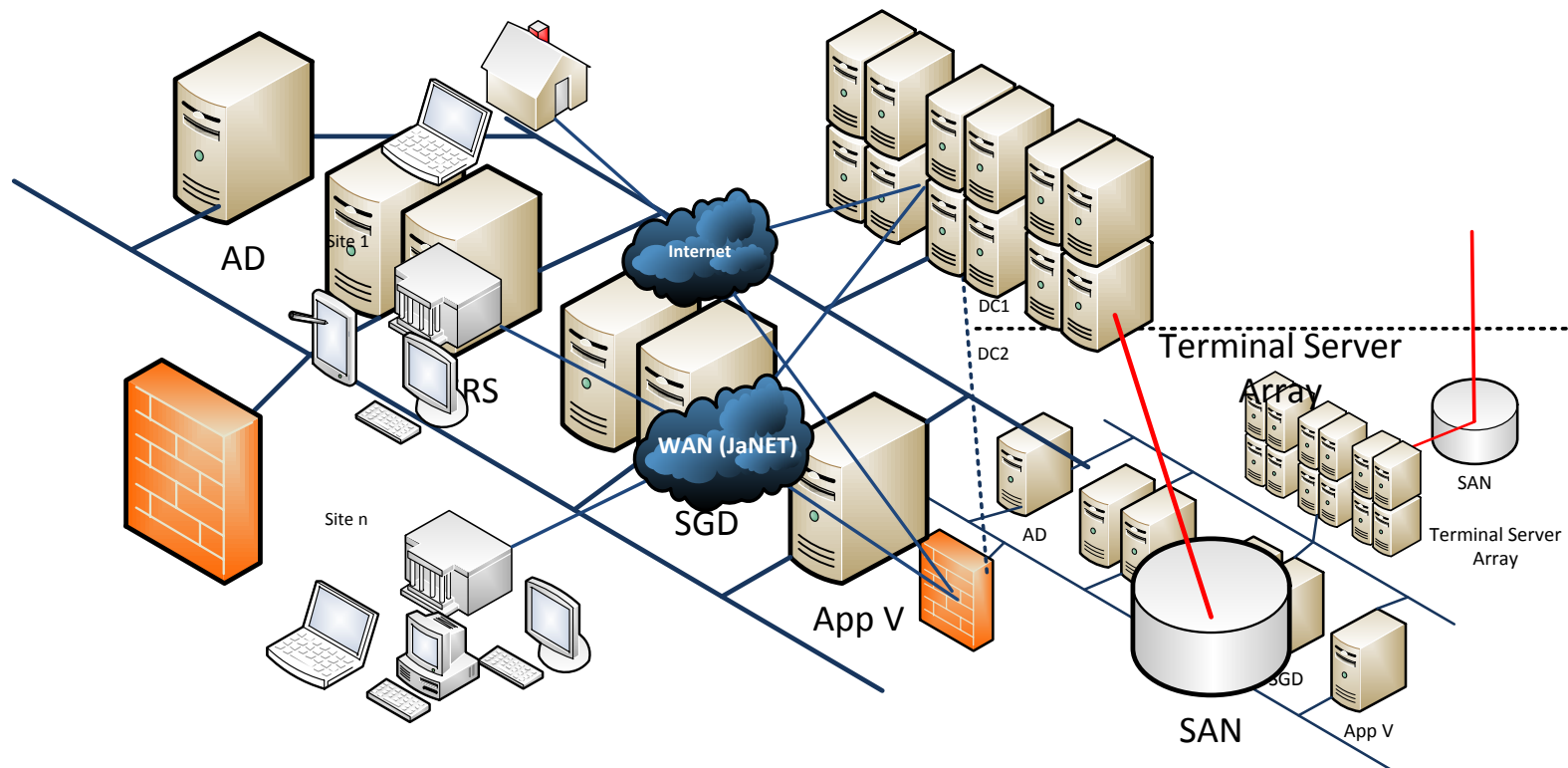
# Supporting BYOD @

**KING'S**  
*College*  
**LONDON**

Alex Howe & Lisa Harrop, Getronics UK

- Jointly developed a standard KCL desktop with;
  - Enhanced information security
  - Access anywhere, from any device
  - Virtualised applications
  - Centralised management
  - Resilience
  - No desktop hardware replacement
  - Priced based on consumption
  - Scalable

# The solution



# The result



# The journey/lessons learned

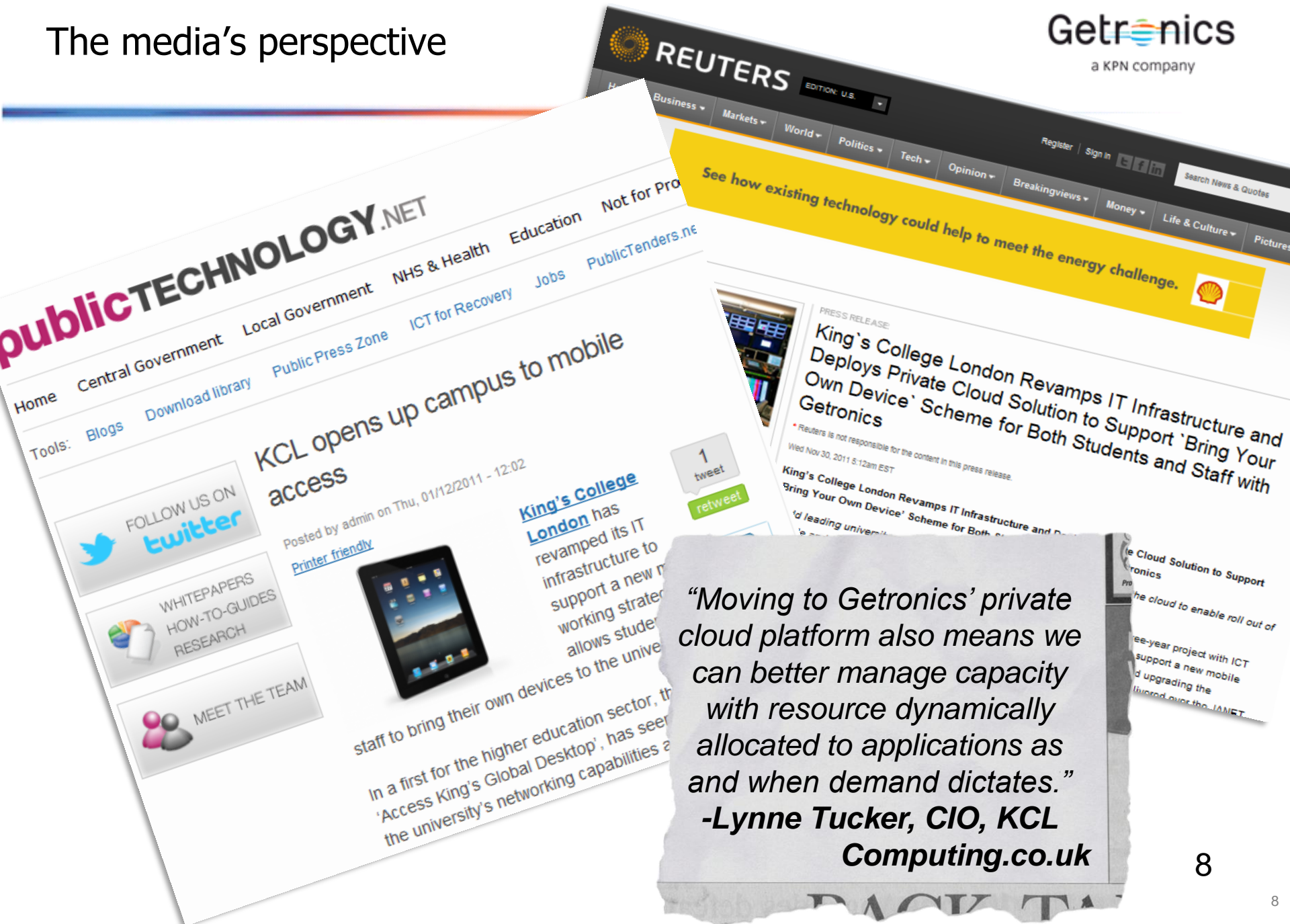
- A complex project
  - An unmanaged starting point
  - Multiple services providers
- A number of issues that were overcome together on the way
  - Multi site configuration
  - Load balancing and session recovery
  - WAN optimisation
  - User expectations against user experience
  - User profile management
    - Including user profiling...
  - Segregation and ownership of responsibilities
    - Change management, application packaging, active directory
  - Governance

# The future...

- Next generation hardware infrastructure
  - Leveraging Getronics Shared Services infrastructure
  - A more granular approach to scalability and as a result cost
- More granular user virtualisation
  - Improvements to user experience
- Further industrialisation of supporting processes
  - Further automation of provisioning and process orchestration
- Single active site with DR fall back rather than active-active
  - Investigating the Cloud for DRaaS
- Cloud services aggregation
  - Google Apps, Microsoft Live@Edu...
- ...plus more...



# The media's perspective



*"Moving to Getronics' private cloud platform also means we can better manage capacity with resource dynamically allocated to applications as and when demand dictates."*

**-Lynne Tucker, CIO, KCL**  
**Computing.co.uk**

Thank you....

...any questions?





# Alex Howe

[alex.howe@getronics.com](mailto:alex.howe@getronics.com)

+44 7833 094081

# Lisa Harrop

[lisa.harrop@getronics.com](mailto:lisa.harrop@getronics.com)

+44 7771 945948

**KING'S**  
*College*  
**LONDON**